

CANDY CANE MERINGUES



full plates, happy hearts

SCRUMPTIOUS BEEF WELLINGTON



35 Fabulous Festive Recipes!



EASY HOMEMADE PASTAS

GOOD HOUSEKEEPING
QUALITY TESTED

GOOD HOUSEKEEPING

The Cozy Season



Delish Sweets & Cookies

Fun Family Games

Top-Tested Kitchen Gear

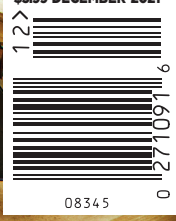
Ultimate
HOLIDAY STAIN GUIDE
PAGE 24



50+
GIFTS
and
TOYS
for all!



GOOD HOUSEKEEPING
\$3.99 DECEMBER 2021



08345

Your Home

Decorating, Organizing & Cleaning Solutions

Fake it 'til you make it.

This fireplace doesn't have a mantel—surprise!—but greenery mounted at the right height offers a jovial illusion. Finish the look by hanging red, green and white stockings with care.

FROM THE COVER!

Magical MANTELS

Inspiring decor ideas and designer-approved tricks guaranteed to warm your hearth (and heart!) at any time of year

by MONIQUE VALERIS and AMANDA GARRITY

DECEMBER 2021 GH 35



Candles and more candles!

Amp up your mantel with a monochromatic display of different heights and sizes for visual interest. Hang Christmas stockings with ribbon in a complementary hue for a cohesive setup.

Safety tip: Don't place lit candles on the mantel. Use electric candles if you like the look of glowing flames.



Showcase your treasures.

Use your mantel as a spot to play up your favorite vintage finds, from a chalkboard sign in a unique frame to an assortment of ceramics that you've collected over time. If your arrangement consists mainly of neutrals, infuse them with a dose of color by adding tall, leafy branches or small bowls of fresh produce (think limes) for an unexpected touch.

Mix heights, sizes and shapes.

Varying visual heights is important, especially atop a mantel. Enliven yours with a combination of stylish pieces, including candlesticks, artwork and decorative vessels. Overlap layers to create a sense of depth.



Candles: Madeleine Harper, designed by The Identité Collective. Vintage pieces: Layla Palmer. Layers: Amy Neunsinger.

Go grand with a mirror.

Accentuate high ceilings with a large reflective surface on the mantel. Surround it with an abundance of plants, flowers, artwork and curios.



← Hang a wreath!

In this outdoor living room, designer Maggie Griffin layered a festive wreath over a mirror. “Outdoor gathering spaces should be treated as interior rooms,” she says. “I loved having a vintage bamboo mirror over the fire. The addition of a faux-berry garland was a playful yet elevated nod to the holiday season.”



→ Put your hobbies front and center.

There’s no reason your favorite pastimes can’t be part of your decor. Personalize your mantel and create a conversation starter by embellishing the space with handsome gear like oars or binoculars. Unify the look with art that highlights the theme.



Dog: Pieter Estersohn. Wreath: Photographed and designed by Maggie Griffin Design. Hobbies: Paul Massey/Loupe Images.

→
Go lopsided.

While showcasing a full range of collectibles is a great styling approach, you can simplify it with a vignette on a single side. Here, two mirrors with distinct frames shine alongside a stack of three coffee-table books for balance. The result is a mantel that's effortlessly chic.



←
Paint brick to match the mantel.

For a relaxed and spontaneous look, play with overloading objects on one side. In this space, designer Velinda Hellen also used shape and texture to add interest. "The black frame pulls the eye as the natural fibers of the vase and the shape of the hand keep these pieces from becoming boring despite being 'neutral,'" she says.

Mirrors: David Tsay, Brick: Sara Ligorria-Tramp, designed by Velinda Hellen for Emily Henderson Design. Four Seasons: Aydin Arjomandi, designed by Phillip Thomas.



**Design for the entire season
(not just the holiday).**

To keep your decor fresh without changing it monthly, highlight aspects of the four seasons. In this display, designer Phillip Thomas mixed natural textures with metallics and other elements that reflect light to add an icy winter sparkle.